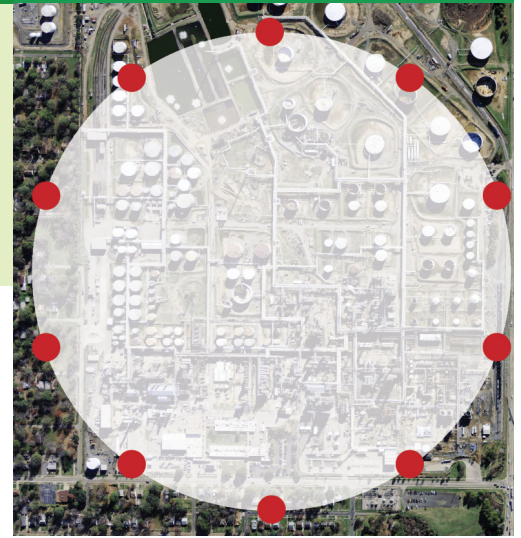


# EPA METHOD 325A/B & ENTHALPY FENCELINE USERS WORKSHOP

## Complimentary Training Course

This workshop is designed to provide an overview of the EPA Method 325A and 325B and passive sampling technologies. The course also offers insight into how to avoid potential sampling and analytical pitfalls that may compromise the integrity of your monitoring program.

The course is designed to be collaborative, allowing for the sharing of ideas and experiences. Additionally, detailed instruction on the use of Enthalpy's field sampling and data management tool, 'Enthalpy Fenceline' is provided.



### COURSE TOPICS

#### EPA METHOD 325A/B OVERVIEW

##### EPA METHOD 325A

- Siting considerations
- Sample shelters
- Sampling and record keeping
- Sample handling and storage

##### EPA METHOD 325B

- TD-GC/MS Measurement Technology Overview
- Review of QA/QC indicators and what they mean for your data
- Review of Method Updates: how will they affect your results
- Other compounds of interest: Addendum A

#### ROUNDTABLE DISCUSSION: LESSONS LEARNED

- Laboratory 'Rejects' – How to minimize potential for lost samples
- Understanding unexpected results

#### TROUBLESHOOTING HIGH RESULTS

- Conventional Methods: Monitoring Adjustments, FLIR, etc.
- Emerging Technologies: Real time measurements, OPFTIR, UVDOAS, etc.

#### LABORATORY TOUR

- Sample receiving
- Instrumentation
- Tube prep

#### 'ENTHALPY FENCELINE' SOFTWARE USERS TRAINING

##### WEB APPLICATION

- Web application security
- Company Setup
  - Credentials
  - 3rd Party Users
  - Multiple Sites
  - Met data
- Facility Setup
  - Creating areas
  - Adding shelters
  - Creating routes
  - Creating events

##### MOBILE APPLICATION

- Downloading sample events
- Conducting sampling
- Uploading field data
- Chain of custody

##### REPORTING

- Laboratory data upload – notifications and alerts
- Review of results
- Reporting option
- CEDRI

### LOCATION

Enthalpy Analytical  
800-1 Capitola Dr.  
Durham, NC 27713  
(10 minutes from RDU airport)

### DATES

January 23-24, 2018

### RSVP

by January 12, 2018

### [REGISTER HERE](#)

(CLICK)

### FEE

Free; includes refreshments and lunch

### AGENDA

Day 1

7:45 am - 5:00 pm

Day 2

7:45 am - 3:00 pm

Enthalpy is a leading provider of EPA Method 325B analytical services with extensive experience in the design and implementation of passive fenceline monitoring programs. The trainers have first-hand experience with all facets of fenceline monitoring resulting in a practical and effective training experience for attendees with any background. To learn more about our EPA Method 325A/B services go to: [enthalpy.com/epa-test-method-325b/](http://enthalpy.com/epa-test-method-325b/)

Enthalpy Analytical, LLC  
(919) 850-4392  
[info@enthalpy.com](mailto:info@enthalpy.com)



ENTHALPY  
ANALYTICAL