



Cigar Tobacco: An Introduction

Michael D. Hartley
Universal Leaf Tobacco Company
Dark Air-Cured Group

Tobacco Science Research Conference
September 18, 2018
Memphis, TN

Outline

- Cigar/Cigarette tobacco comparison
- Cigar tobacco explained
- Unique to cigar tobacco
- Cigar tobacco variability
- Summary

Cigar/Cigarette Tobacco Comparison

Cigarette tobacco

The "perfect" field



The "optimal" leaf



The "suitable" blend



Cigar tobacco

Creating the "perfect leaf"



"Perfect leaf" for curing



"Perfect leaf" cured



Cigar/Cigarette Comparison (cont.)

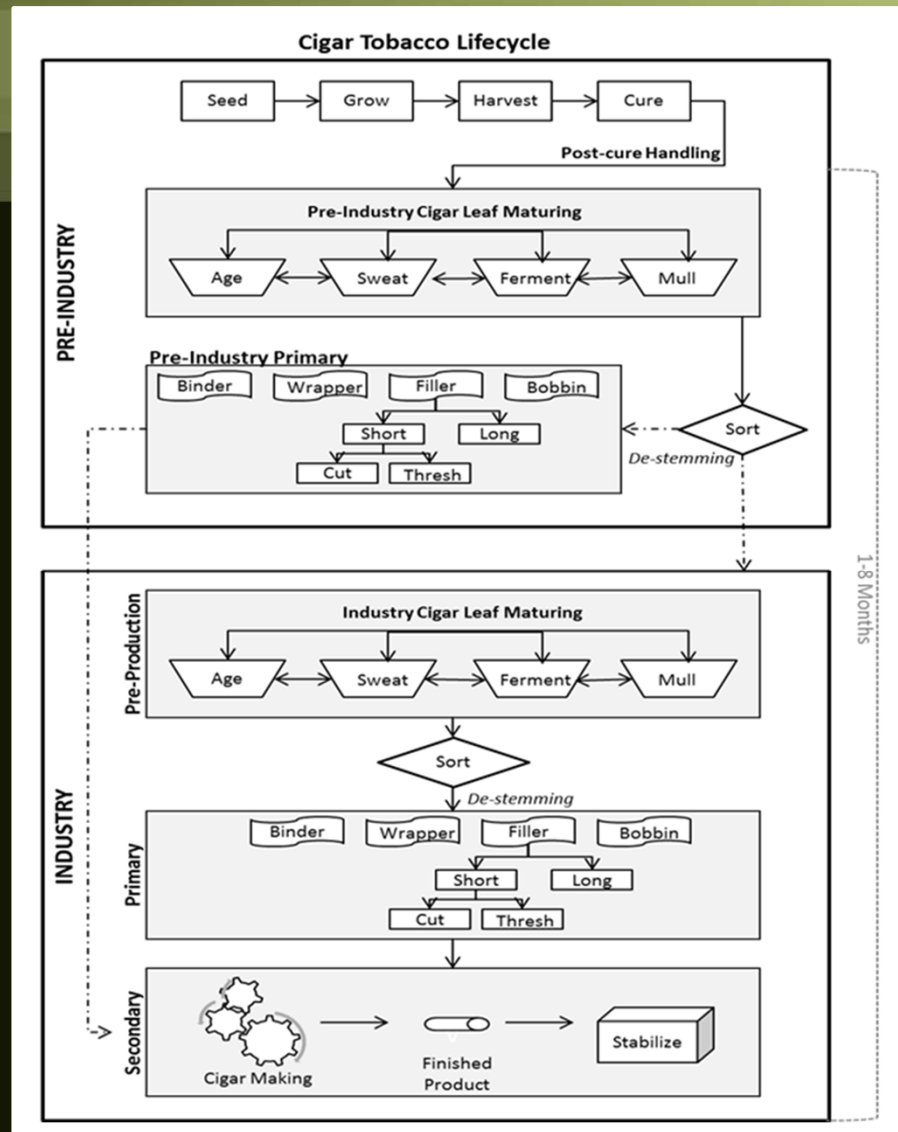
	<u>Cigar</u>	<u>Cigarette</u>
Worldwide Production:	120,000 tons (2%)	5,000,000 tons (98%)
Tobacco Processing:	-leaf maturing, sorting, packing (2-10 months)	-threshing, drying, packing (30 mins)
Packing:	-packing in various forms in various sized bales/materials at 15-18% moisture	-packed as threshed strips in uniformed cartons at 12%

Cigar/Cigarette Tobacco Comparison (cont.)

	<u>Cigar</u>	<u>Cigarette</u>
Reducing sugars:	-reducing sugars near 0%	-reducing sugars 8-15% FCV, 30% Oriental
Seed types:	-1 type (DAC) -many sub types 11 +	-3 + types (FCV, LAC, OR)
Wrapper:	-natural leaf (many types) -reconstituted	-paper
Binder:	-natural leaf (many types) -reconstituted	-no binder

Cigar Tobacco Explained

Cigar Tobacco Lifecycle



Ref: Leaf Science Agenda
 Ciambone K, ITG Brands, LLC., 714 Green Valley Road Greensboro, NC 27408
 Cigar Science Workshop JAN2018

Cigar Tobacco Explained

Long filler:

- whole leaves
- made into frog-strips

Short filler:

- threshed, cut tobacco, or bits/pieces from long filler processing

Binder:

- used to hold together the filler
- can come from wrapper production or filler production
- needs to be a sound leaf

Wrapper:

- the outer covering of a cigar
- usually requiring a uniform, pretty appearance

Long Filler
Folhas Inteiras

Short Filler
Fumo Picado







JUL/12/2013

Unique to Cigar Tobaccos

- Seed types
- Specialized growing conditions
- Quality aspects
- Leaf maturing
- Processing/sorting



Unique to Cigar Tobaccos

Cigar Tobacco Seed (DAC Sub-types)

- Cuban seed
- Connecticut Broadleaf
- Sumatra
- Cameroon
- Arapiraca
- various local dark air-cured
- Connecticut Shade
- PA 41
- Besuki
- Olor
- Mata Fina/Mata Norte

Unique to Cigar Tobaccos (cont.)

Cigar Tobacco Seed (DAC Sub-types) (cont.)

-within seed sub-types there are many varieties:

for example:

Cuban seed (*Dominican Republic*):

- Corojo 99
- Habana 2000
- Vuelta Abajo,
- Criollo 98,
- Piloto Cubano
- San Vicente

Unique to Cigar Tobaccos (cont.)

Cigar Tobacco Seed (DAC Sub-types) (cont.)

- very little Cytoplasm Male Sterile (CMS) varieties
- within varieties farmers/suppliers have their own selections
- breeding for cigar types has been focused on leaf characteristics, i.e. taste, color, aroma

Unique to Cigar Tobaccos (cont.)

Specialized growing conditions

- for wrapper production in certain growing area, the use of shade cloth is used
- for some desired wrapper types, it is sun grown



“Shade grown”



Unique to Cigar Tobaccos (cont.)

Quality aspects

- much care is taken in the growing of cigar tobaccos to maintain sound (not broken) leaves
- in the case of wrapper tobacco, attention is paid to keeping the leaves blemish free

“handled with care”



Unique to Cigar Tobaccos (cont.)

Leaf Maturing

- most cigar types receive some type of leaf maturing
- a natural process that is a continuation of the ripening and curing process to develop aromatic characteristics and uniform/darken colors

Unique to Cigar Tobaccos (cont.)

Leaf Maturing (cont.)

-leaf maturing methods include:

“fermenting”

“sweating”

“mulling”

“aging”

-leaf maturing can occur at the farm, supplier, and manufacture level

-leaf maturing methods can vary from company to company

*“Fermentation
pile”*



“Mulling”



“sweating”



Unique to Cigar Tobaccos (cont.)

Processing/sorting

- individual leaves are sorting into criteria such as textures, quality grade, color, and size
- sorted tobacco is packed in bales of 30 to 60 kilograms
- individual bales are purchased by customers

*“Sorting-
leaf by leaf”*



“Specific colors”

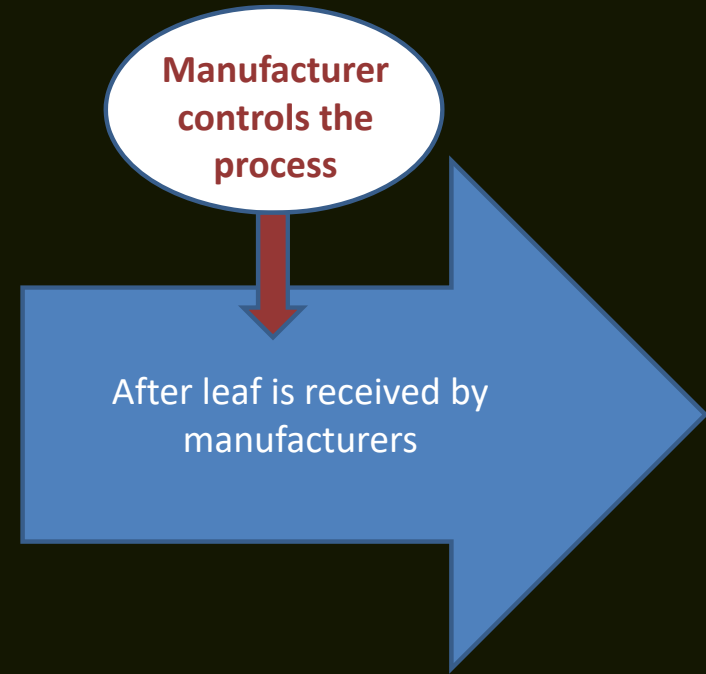
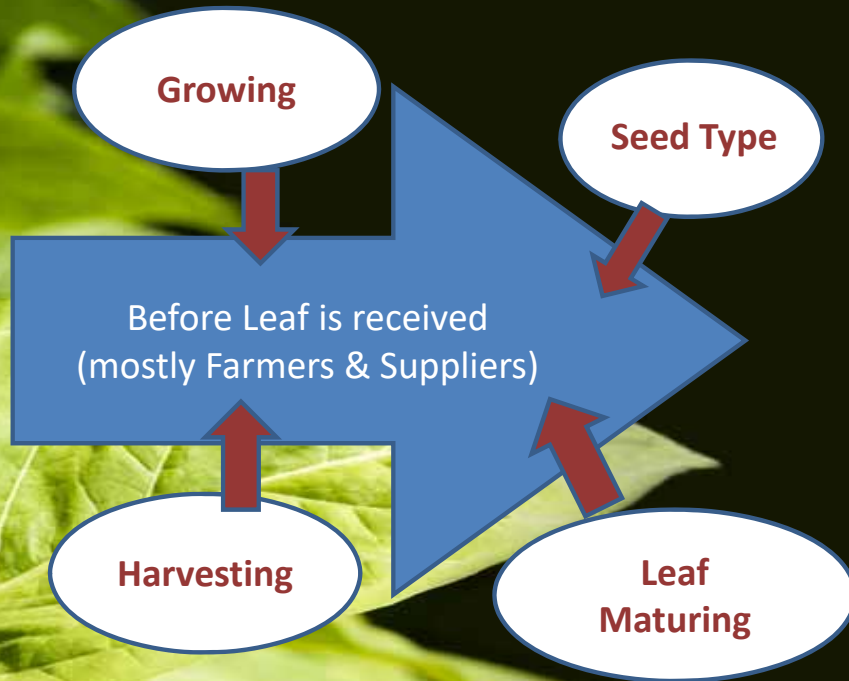


*“Buying –
leaf by leaf”*



Impacts to Cigar Leaf Chemistry

Cigar Tobacco Variability



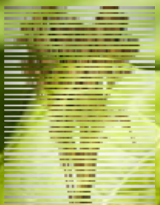
Ref: Leaf Science Agenda
Ciabrone K, ITG Brands, LLC., 714 Green Valley Road Greensboro, NC 27408
Cigar Science Workshop JAN2018


Universal Leaf Tobacco Company, Inc.

Growing/Harvesting practices

Cigar Tobacco Variability (Cont.)

Leaf:



X
Grow

**1 Seed
Variety**



Ref: Leaf Science Agenda
Ciabrone K, ITG Brands, LLC., 714 Green Valley Road Greensboro, NC 27408
Cigar Science Workshop JAN2018

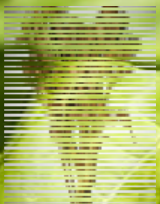


Universal Leaf Tobacco Company, Inc.

Curing

Cigar Tobacco Variability (Cont.)

Leaf:



X
Grow

X
Cure

1 Seed
Type



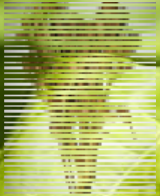
Ref: Leaf Science Agenda
Ciambrone K, ITG Brands, LLC., 714 Green Valley Road Greensboro, NC 27408
Cigar Science Workshop JAN2018


Universal Leaf Tobacco Company, Inc.

Leaf Maturing

Cigar Tobacco Variability (Cont.)

Leaf:



X
Grow

X
Cure

X
Leaf Maturing

1 Seed Type



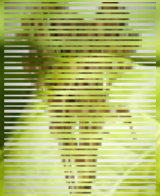
Ref: Leaf Science Agenda
Ciambrone K, ITG Brands, LLC., 714 Green Valley Road Greensboro, NC 27408
Cigar Science Workshop JAN2018

 Universal Leaf Tobacco Company, Inc.

Age

Cigar Tobacco Variability (Cont.)

Leaf:



1 Seed Type

X Grow



X Cure



X Ferment



X Age

An example of the many **Leaf Chemistry VARIATIONS** from 1 Seed

Ref: Leaf Science Agenda
Ciabrone K, ITG Brands, LLC., 714 Green Valley Road Greensboro, NC 27408
Cigar Science Workshop JAN2018

Universal Leaf Tobacco Company, Inc.

In summary

Cigar tobacco in general:

- Has unique aspects about it that distinguishes it from typical cigarette tobaccos
- Predominate style of tobacco where individual leaves are graded, purchased, and used as whole leaves
- Very little standardization such as leaf maturing and processing (when compared to cigarettes)
- Possibility of variability is higher (when compared to cigarettes)



Thank you.

Tobacco Science Research Conference
September 18, 2018
Memphis, TN